



Caxton®

17" oval undermount bathroom sink
K-2209

Features

- Oval basin with unglazed underside
- Overflow drain
- No faucet holes; requires wall- or counter-mount faucet

Material

- Vitreous china

Installation

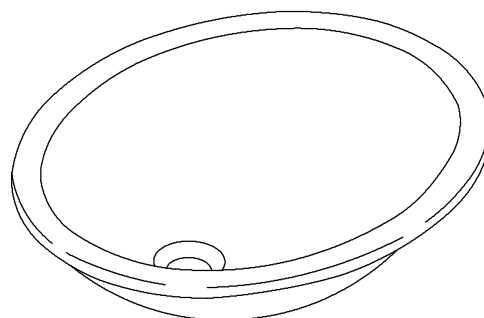
- Undermount

Recommended Products/Accessories

K-8998 P-Trap
K-23726 Drain treatment
K-23725 Cast iron cleaner

Included Components

Additional Components:
1193643



ADA

CSA B651

Codes/Standards




ASME A112.19.2/CSA B45.1
ADA
ICC/ANSI A117.1
CSA B651

KOHLER® One-Year Limited Warranty

See website for detailed warranty information.

Available Colors/Finishes

Color tiles intended for reference only.

Color	Code	Description
	0	White
	96	Biscuit
	7	Black Black™

1-800-4KOHLER (1-800-456-4537)

Kohler Co. reserves the right to make revisions without notice to product specifications.

For the most current Specification Sheet, go to www.kohler.com.

2-21-2023 21:58 - US/CA

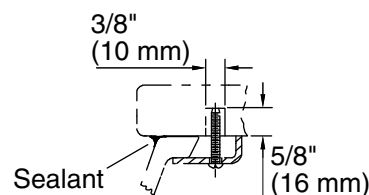
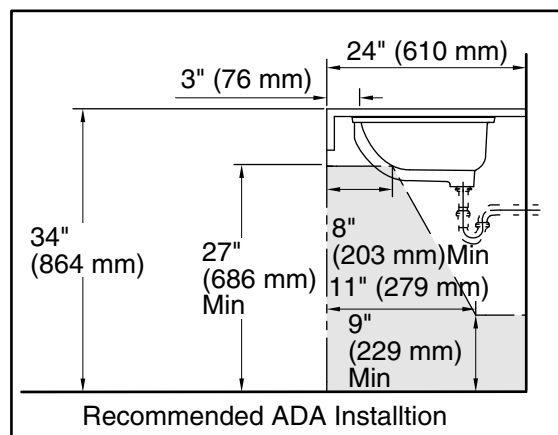
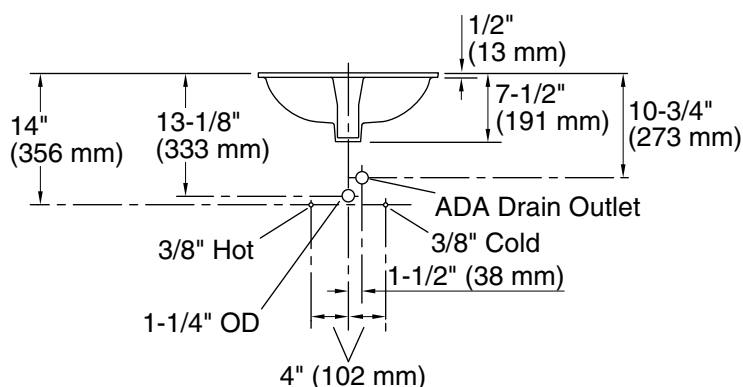
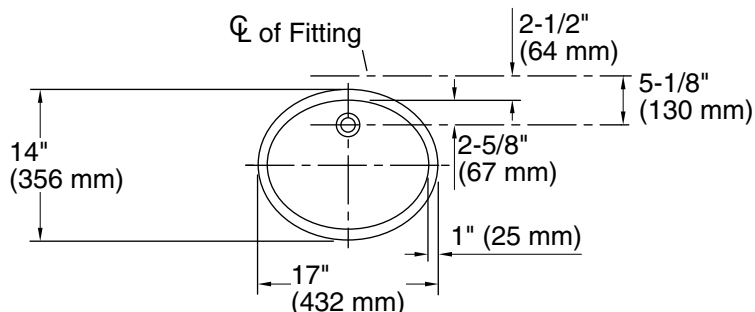
THE BOLD LOOK
OF **KOHLER®**

KOHLER®

Caxton®

17" oval undermount bathroom sink

K-2209



Marble Installation



Wood Installation

Technical Information

All product dimensions are nominal.

Installation: Undermount

Bowl area: Length: 15-1/4" (387 mm)

Width: 12-1/4" (311 mm)

Bowl depth: 5-3/4" (146 mm)

Water depth: 4" (102 mm)

Drain hole: 1-3/4" (44 mm)

Template: 85838-7, required, not included

Notes

Install this product according to the installation instructions.

NOTICE: Countertop manufacturer or cutter must use the current product template available at www.kohler.com, or by calling 1-800-4KOHLER. Kohler Co. is not responsible for cutout errors when the incorrect cutout template is used.

ADA, CSA B651 compliant when installed to the specific requirements of these regulations.